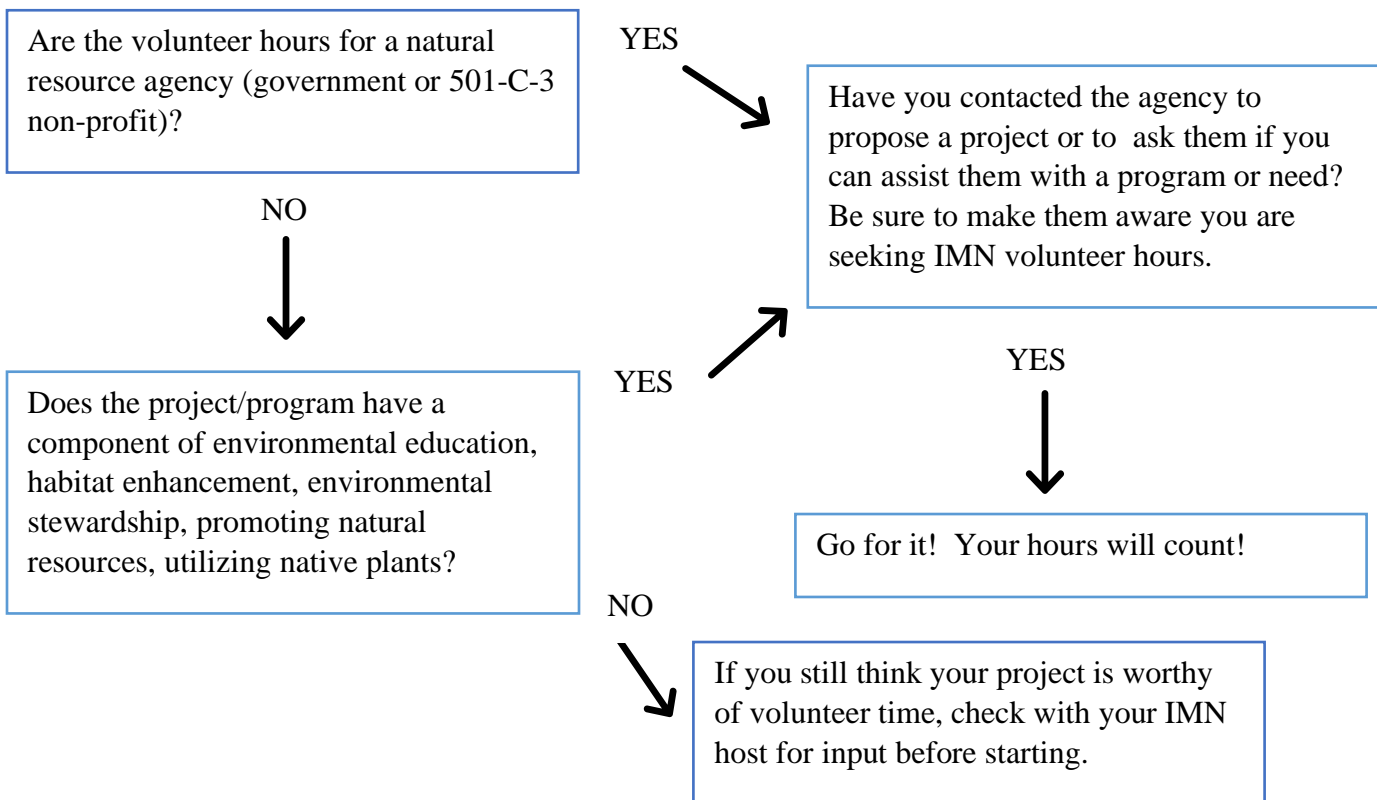


IMN Volunteer Hours



1. The IMN program values work done locally. Please try to keep the majority of your hours in-state.
2. Please be aware that you can't double-count hours; for example, one project hour can't be counted for both IMN and Master Gardener volunteering. No double dipping!
3. IMN participation is encouraged in international, national, regional, and local citizen science activities. However, considering the substantial amount of time that can be involved in doing many of these, an IMN intern may submit no more than 8 hours of citizen science activities toward their initial 24 required hours. The remaining 16 hours must come from other volunteer sources. Advanced IMNs may submit no more than 10 hours of citizen science activities toward their 30 required hours. (Exceptions may be made for those IMNs with physical disabilities.)
4. Volunteer time must be uncompensated, of benefit to others beyond your immediate family or friends, and occur in public spaces.
5. We encourage you to volunteer with several different groups or agencies to find out which activities you most enjoy.