

Water Resources

in Elkhart County and Beyond



Do You Know?

Learning Objectives

What watershed do you live in?

Where does our drinking water come from?

Is water quality or water quantity more important in our area?

How can we protect our water resource?

The Big Picture



Of all the water on Earth,
about 2.5% is freshwater

That 2.5% is made up of different “pools” of freshwater

Ice 1.8%

Groundwater
and Soil Water 0.69%

Surface Freshwater 0.01%

The Big Picture



Only about 0.003%
of the freshwater supply is available
for human consumption



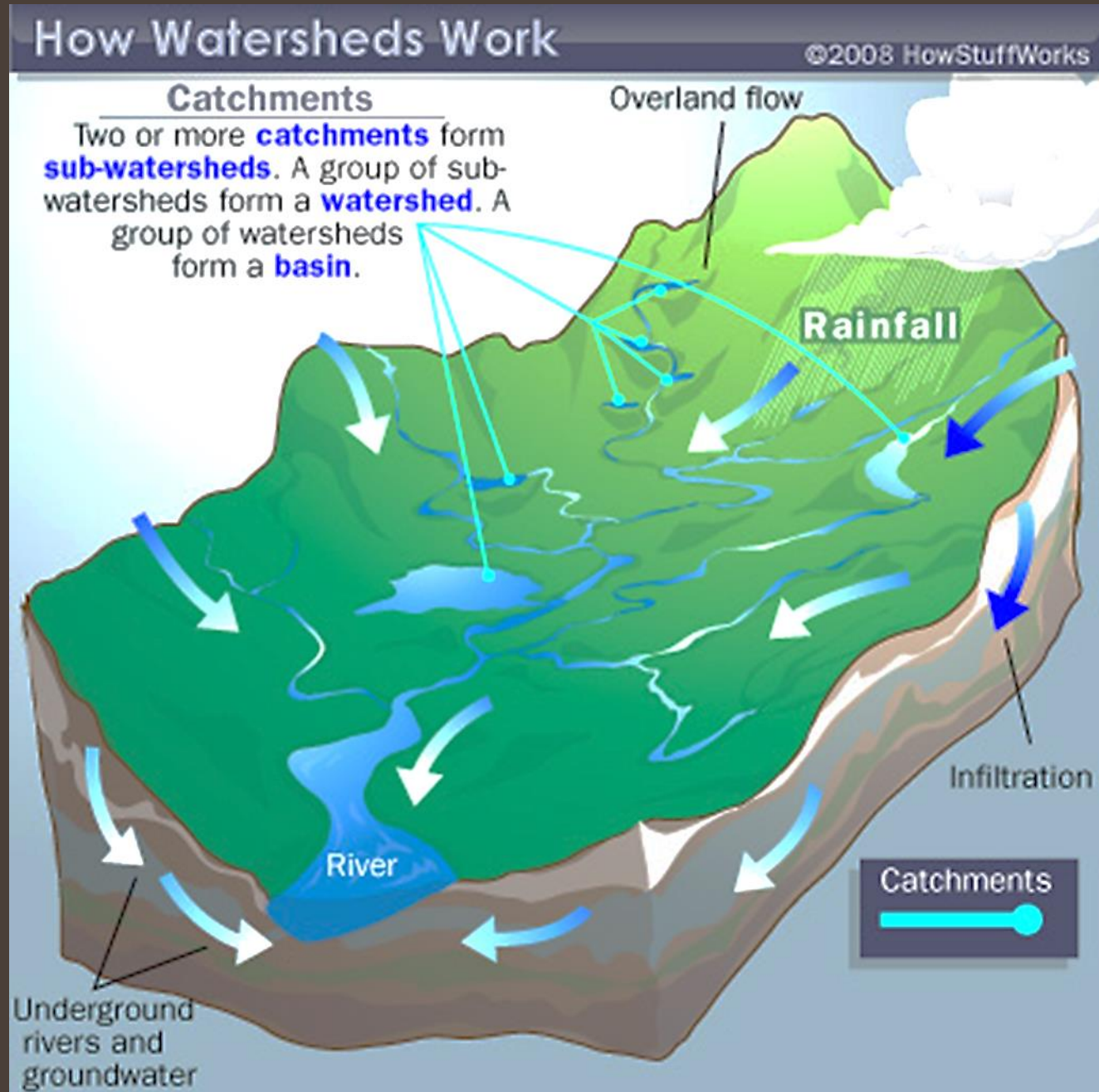
ELKHART COUNTY
SOIL & WATER
CONSERVATION DISTRICT

Watersheds

A watershed is the area of land where all of the water that falls in it and drains off of it goes to a common outlet

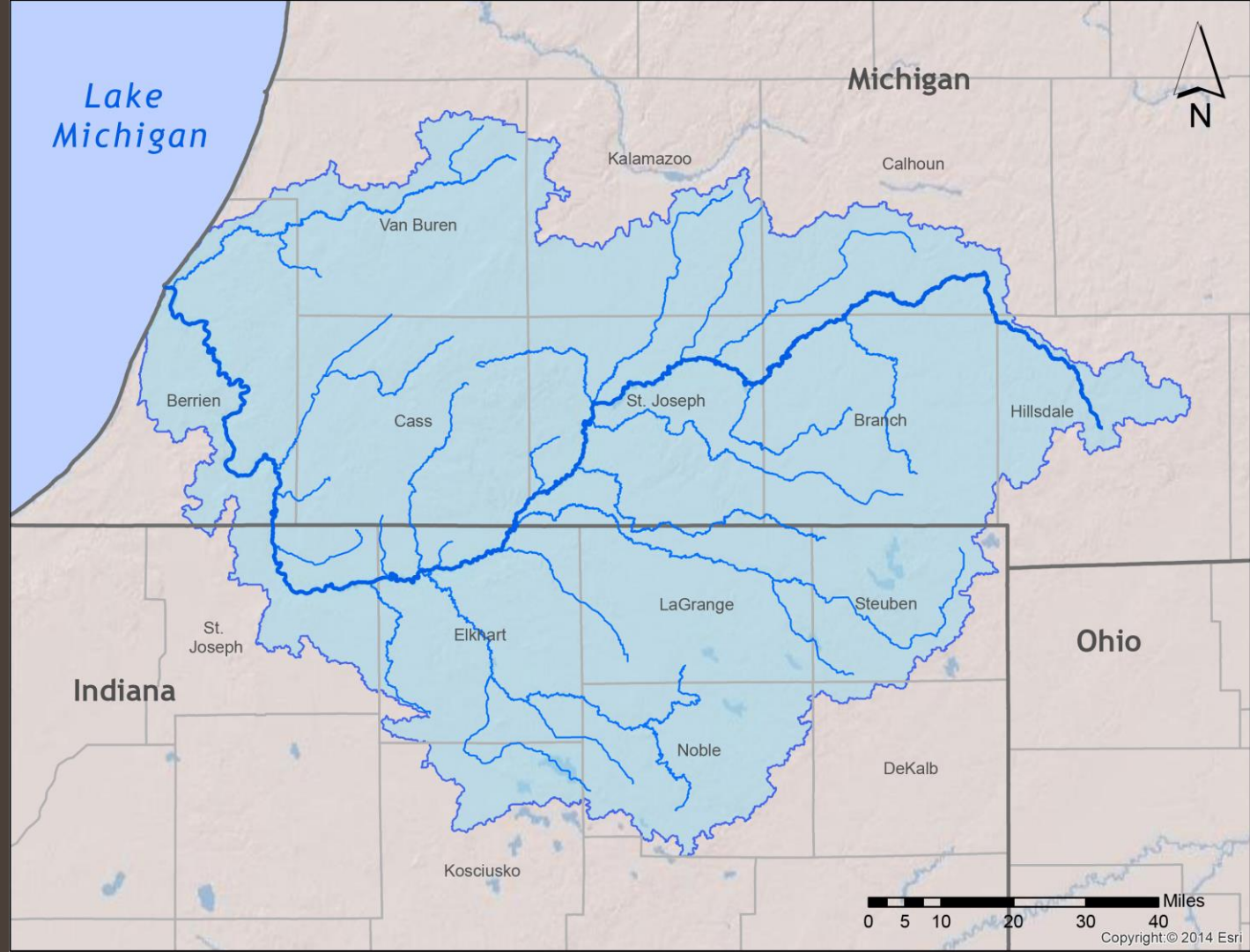


ELKHART COUNTY
SOIL & WATER
CONSERVATION DISTRICT



Our Watershed

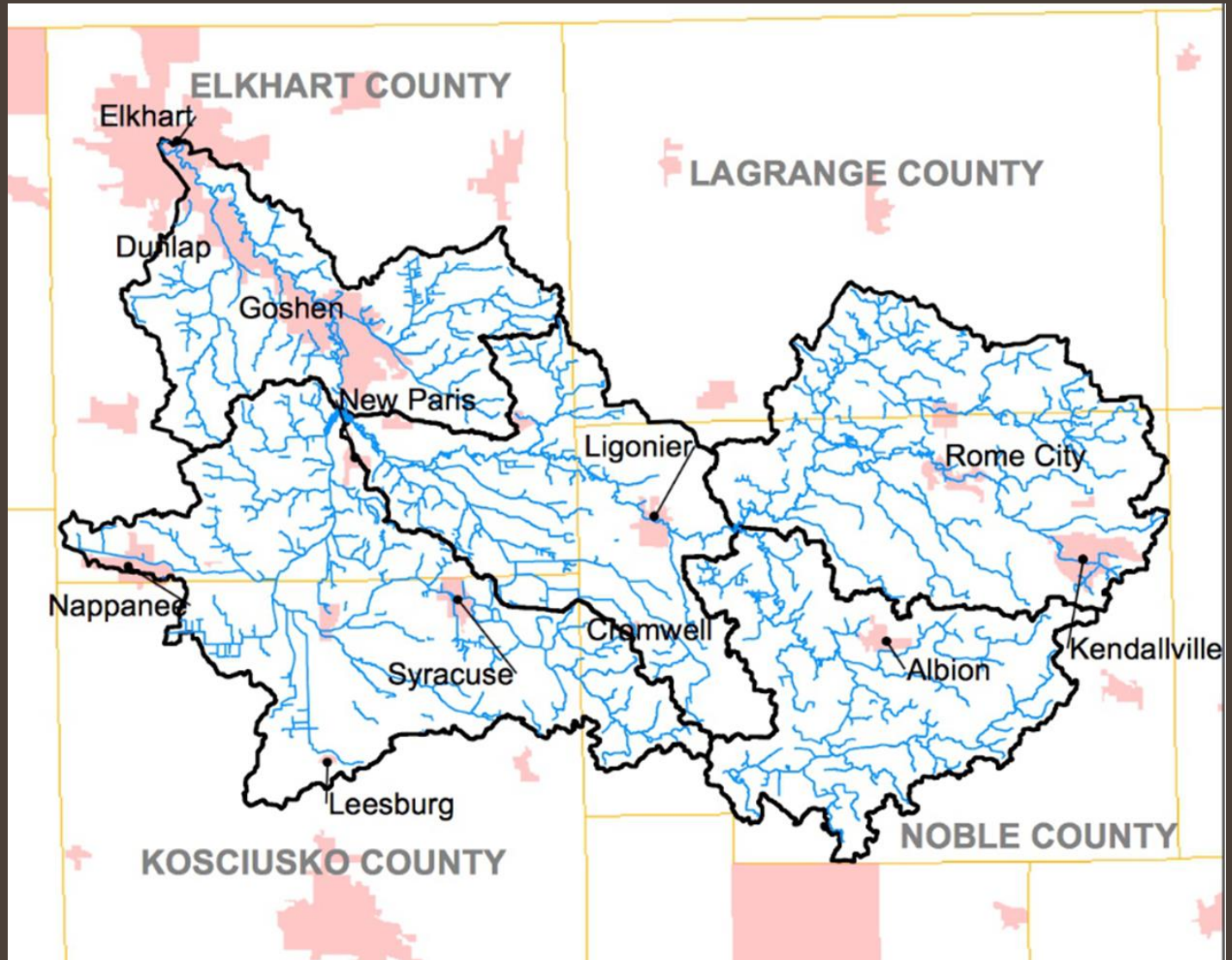
The St. Joseph River Basin



ELKHART COUNTY
SOIL & WATER
CONSERVATION DISTRICT

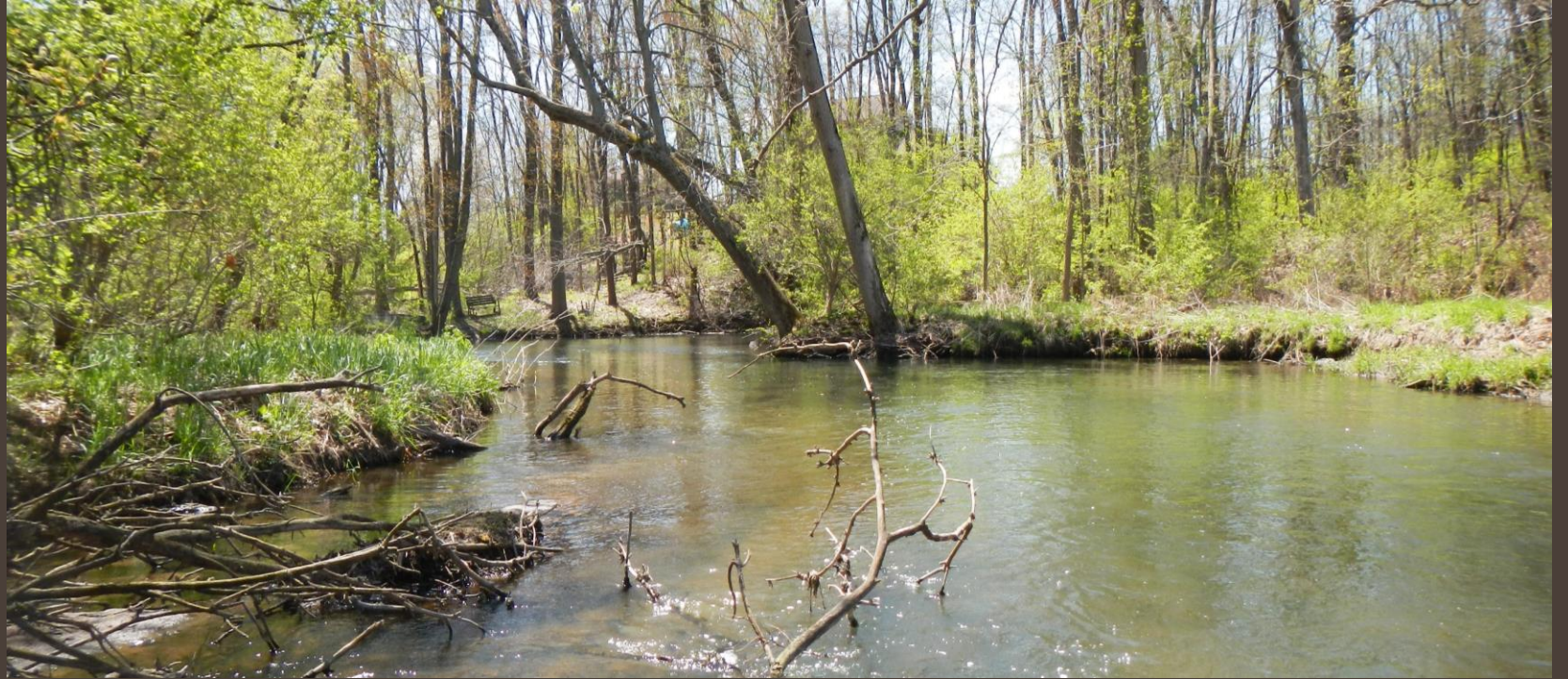
Our Watershed

Elkhart River Watershed



ELKHART COUNTY
SOIL & WATER
CONSERVATION DISTRICT

What is the
source of our
drinking
water?



ELKHART COUNTY
SOIL & WATER
CONSERVATION DISTRICT

Aquifers

A body of permeable
rock that can contain
or transmit
groundwater

The St. Joseph River Basin has both shallow and deep aquifers that are highly productive

WHAT THAT REALLY MEANS IS:

*In our area, groundwater is plentiful
and we shouldn't be running out any
time soon.*



ELKHART COUNTY
SOIL & WATER
CONSERVATION DISTRICT

Quantity vs Quality

So, we have plenty
of water...

Should Elkhart County's conservation
efforts focus on the QUANTITY of water
or the QUALITY of water?

Protecting Water Quality

Put it context!

A 1,500 square foot house on a small lot
produces **5,000 gallons**
of runoff from a
1 inch rain storm

That amount of
water would fill
your bathtub
125 times!



This Photo by Unknown Author is licensed under [CC BY-SA](#)



ELKHART COUNTY
SOIL & WATER
CONSERVATION DISTRICT

Protecting Water Quality

Rain Gardens



ELKHART COUNTY
SOIL & WATER
CONSERVATION DISTRICT

Protecting Water Quality

Rain Barrels



ELKHART COUNTY
SOIL & WATER
CONSERVATION DISTRICT

Protecting Water Quality

Filter Strip

(a.k.a. buffer strip)



ELKHART COUNTY
SOIL & WATER
CONSERVATION DISTRICT

Protecting Water Quality

Cover Crops



ELKHART COUNTY
SOIL & WATER
CONSERVATION DISTRICT

Infiltration and Runoff

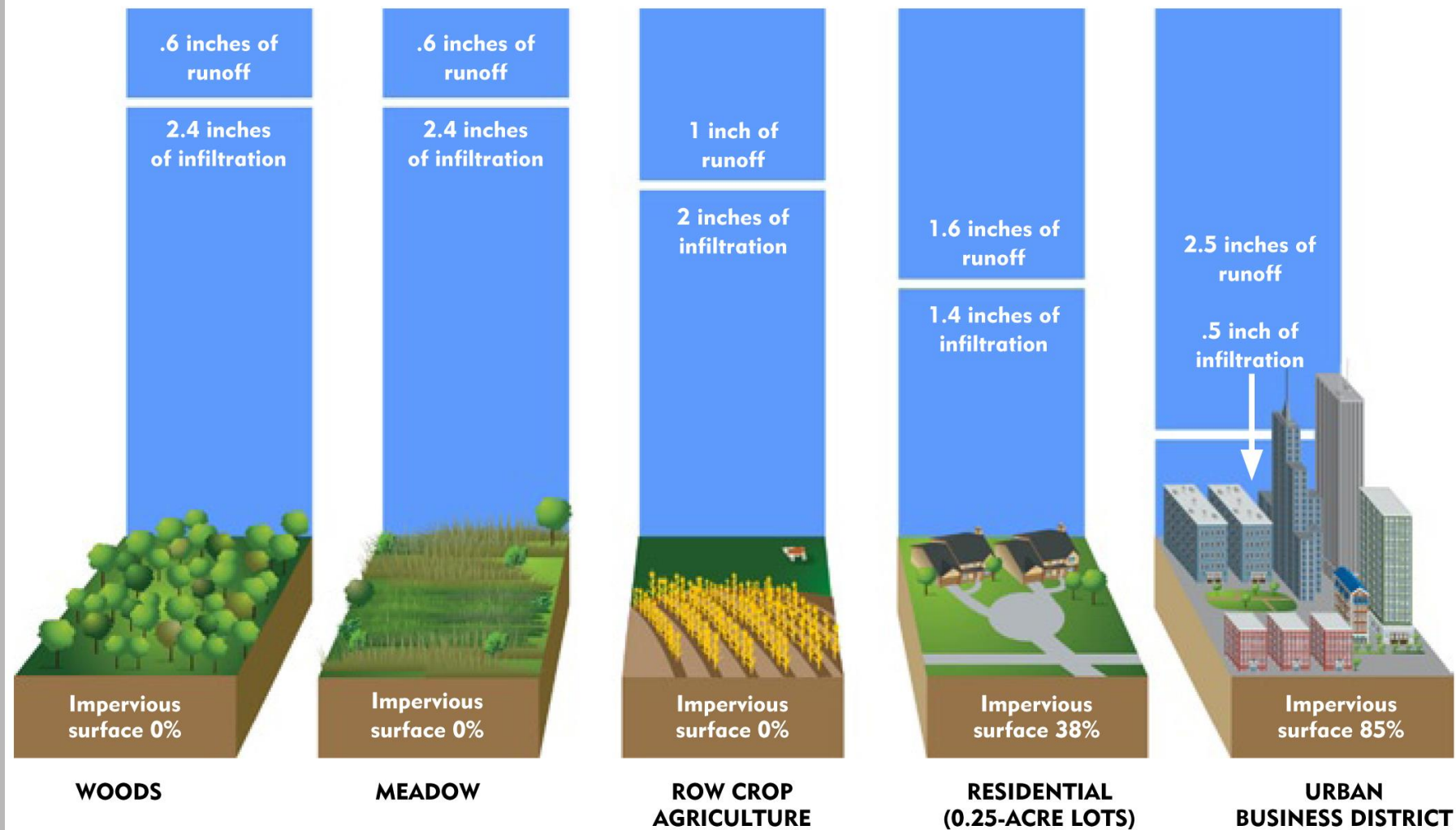
Demonstration



ELKHART COUNTY
SOIL & WATER
CONSERVATION DISTRICT

Infiltration and Runoff

Impervious
vs.
Pervious



ELKHART COUNTY
SOIL & WATER
CONSERVATION DISTRICT

Explore these
links and the
“notes” section
below each slide
for background
information

Learn More!



ELKHART COUNTY
SOIL & WATER
CONSERVATION DISTRICT

Supporting Information, Resources, and Classroom Activities

National Geographic Lesson Plans:

<https://www.nationalgeographic.org/education/resource-library/>

NASA Water Education Lesson Plans:

<https://pmm.nasa.gov/education/lesson-plans/water-conservation>

PBS Water Conservation Lesson Plans:

https://indiana.pbslearningmedia.org/resource/esso5.sci.ess.watcyc.lp_waterconservation/water-conservation/

Elkhart County Soil and Water Conservation District

Still want to know
more?

Contact us!

17746-B County Road 34
Goshen, IN 46528

574-533-4383 ext 3

www.elkcoswcd.org

